

Bilborough

Area Committee Executive Summary

Unofficial November 2012 Data

Bilborough - Ward Priorities

Theme	Priorities	Key Actions	Outcome	Lead
Safer	<p>ASB reduction</p> <p>Anti-Social Behaviour as it develops</p>	<p>1. FCT will work with partners via the established Bilborough network to increase provision of diversionary activities across the ward</p> <p>Police Interact with the community to identify key ASB issues and areas through meetings, revisits, briefings and Alert system feedback. Through this offenders can be identified and enforcement can be carried out.</p> <p>Positive proactive Policing to identify offenders and hotspot areas in order to deter continued behaviour. High visibility patrols at key times by Officers and PCSOs.</p> <p>Working in partnership with other agencies to assist in engagement and enforcement activities.</p> <p>Community Protection Community Protection Officers to patrol at key times with Police colleagues and to deliver initial warnings to those committing the ASB (and / or their families).</p> <p>Liaise with the Police to provide CCTV evidence for intelligence and enforcement.</p> <p>Take formal warning and enforcement action as necessary.</p>	<p>1. An increased activity timetable of partnership events.</p> <p>Reduction in ASB</p> <p>Increasing trust and confidence with the Community</p>	<p><u>FCT</u></p> <p><u>Police</u></p>

	<p>Anti-Social Behaviour around Birchover Community Centre</p> <p>Reduction in Fires in home.</p>	<p>NCH To advise tenants and deliver warnings as necessary and to liaise with Police and CP to carry out enforcement actions.</p> <p>Specifically for Birchover, closer liaising with Community Centre staff and volunteers, licensing and other agencies.</p> <p>To approach local schools to deliver Riskwatch Fire and Burns Programme.</p>	<p>Reduction in ASB</p> <p>To increase fire safety awareness within the home and to reduce dwelling fires.</p>	<p><u>Police</u></p> <p><u>Fire Service</u></p>
Neighbourhoods	<p>Improve appearance of Neighbourhoods/ gardens/hedges</p> <p>The Neighbourhood to be as clean as the City centre Reduce dog fouling within the ward</p>	<p>Complete Health and Safety Inspections and continue to carry out estate inspections to identify breached of tenancy and ensure estate continues 3 stars aim for 4 Stars</p> <p>Partner led local Clean Up event on Cranwell Estate Spring 2013.</p> <p>Build on relationship with NUSA and local schools to involve students in promoting responsible dog ownership.</p>	To maintain 3 stars and strive for 4	<p><u>NCH</u></p> <p><u>City Services/Jane Ludlow</u></p>

<p>Families</p>	<p>More activities for young people</p> <p>Welfare Reform Awareness</p> <p>Welfare Reform Awareness</p> <p>Improving Adult Literacy</p>	<p>FCT will work with partners via the established Bilborough network to increase provision of diversionary activities across the ward</p> <p>FCT can provide advice and guidance and offer support on debt management.</p> <p>NCH rents team and welfare benefits appointments available at Aspley Housing Office. Ensure all NAT partners have access to available training.</p> <p>West 8 Partnership to coordinate with partners who provide literacy activities for adults.</p>	<p>1. An increased activity timetable of partnership events.</p> <p>Case studies evidence a self assessed improvement in money management/understanding of benefit entitlement.</p>	<p><u>FCT</u></p> <p><u>NCH</u></p> <p><u>West 8 Partnership</u></p>
<p>Health</p>	<p>Raising awareness of health</p> <p>Improve access to health related services in Bilborough</p> <p>Increase</p>	<p>1. FCT work in partnership with health to provide services within the Childrens Centres or can support access to services.</p> <p>2. FCT activities for children, young people and their parents/carers include health messages and healthy refreshments.</p> <p>3. FCT provides cook and eat sessions for parents/carers and their children. Promote local health services through the North Locality joint resource with Ridewise Partners to refer and promote health improvement services</p> <p>Increase no of Change Maker Vols Partners to support engagement &</p>	<p>1. Softsmart monitoring demonstrates increase uptake. 2. Case studies demonstrate self assessment of better understanding of health and importance of prevention</p> <p>1. Session planning will evidence delivery of health messages and services.</p> <p>1. Softsmart monitoring demonstrates good uptake.</p> <p>Joint resource currently being worked on .</p> <p>Postcode/referral data currently being sought being sought to establish a baseline and targets to work towards. Meeting being arranged to promote DOBH to partners.</p> <p>Target to increase no of Bil Ward vols to 5 between Jan-Mar '13.</p>	<p>FCT</p> <p>DOBH/Travel Right</p> <p>DOBH/Partners : FCT/ NCH/ Vol & Com Grps.</p> <p>DOBH/</p>

	<p>engagement & consultation re health issues</p> <p>Identify health needs of older people, including long term conditions</p>	<p>consultation opportunities with local community.</p> <p>Gather Bilborough health stats.</p> <p>Consult older residents & partners on health needs.</p>	<p>Currently liaising with NHS data team</p> <p>Being planned by HPO for North Locality while recruiting vols in Bilborough.</p>	<p>Partners/Neighbourhood Teams</p> <p>DOBH</p>
Working	<p>Raising educational attainment</p> <p>Working Links</p> <p>Increase numbers of local volunteers</p> <p>Promote NCH 'Tenant Academy' for training and involvement opportunities</p>	<p>1. FCT will develop with partners a campus approach to adult learning on the Glenbrook/Children's Centre site to provide a pathway to education, training and employment.</p> <p>NCH to Promote 'working links.co.uk' as discussed in NAT.</p> <p>DOBH/Community Centres etc to promote volunteering as a way of gaining skills to access work.</p> <p>Bilborough residents are aware of and can access training courses through the Tenant Academy that will improve skills and competences to work on community projects and increase employability.</p>	<p>1. The parents/carers of the children who regularly receive books from the Dolly Parton Foundation are supported in their literacy needs to be able to enjoy reading with their children.</p> <p>2. Parents/carers who access the learning opportunities also access other FCT support and activities – increase reach figures.</p> <p>NCH tenants take up courses with Tenant Academy</p>	<p><u>FCT</u></p> <p><u>NCH</u></p> <p><u>NAT Partners</u></p>

Community Engagement

Events Delivered

Event	Lead Partners	Date/Time	Venue
Activities & events for Children & Young People	Bilborough Children&Families Team, NUSA, West 8 Partnership, Libraries. West 8 Partnership (& partners)	Half Term	Throughout the Bilborough Ward
Literacy for Adults		Ongoing	Bilborough Library
Firework Display for the Community	Birchover Community Association	November 3rd	Birchover CC & Park
Christmas Fair	The Vale Community Association	November 17th	The Vale CC
Bilborough Gems	Bilborough Youth Network Partners	November 29th	NUSA
Christmas Fair	Beechdale Community Association	December 1st	Beechdale CC
Community Clean-Up	NUSA, Nottm University, City Services, NMT	December 6th	Bracebridge Dr & surrounding streets
Theatre production	NUSA	December 5&6th	NUSA
Christmas Light Switch On	Councillors, City Services,NMT, Dave Hoyles &team, NUSA, Community reps,Brownies & others	December 13th	Bracebridge Dr and St Johns Church Hall
Christmas in the Community Event	Community reps& groups, NUSA, NMT,	December 15th	NUSA
Community Christmas Lunch	NUSA, SupportNet, Bil Carer's Grp,Local Churches	December 19th	NUSA

Future Events and Activities Planned

Event	Lead Partners	Date/Time	Venue
Budget Consultation	NMT	January 24 th or 31 st TBC & visit grps during Jan	Bilborough market & Lib & Community grps
Welfare Rights Training	NMT for Aspley, Bilborough & Leen Valley	February 2013 TBC	Area 3 TBC
Cranwell Estate Day of Action	NCC, NCH, Police, NUSA, Primary Schs, Local TRA's & other partners	Spring 2013 TBC	Cranwell Estate
Ward Walk	Councillors, NMT, NCH, Police	January 29 th	TBC

Community Engagement

Ward Walks

Area/Estate	Date/Time	Meeting Place
Wigman Rd/Staverton/Monkton/Graylands	28 th November 2012	Bilborough Lib/CC

Community Meetings

Event	Date	Venue
Harvey Hadden Consultation	November 7 th -25 th	Harvey Hadden & groups in Bilborough
Birchover Management Committee meeting	November 14 th	Birchover CC
Ward Forum/ Bilborough Ward Councillors	November 22 nd	NUSA
Bilborough Budget Consultation	November 26 th	Bilborough Lib/CC
Birchover MC & Councillors	December 3 rd	Birchover CC
Vale CA AGM	December 4 th	Vale CC

Finance

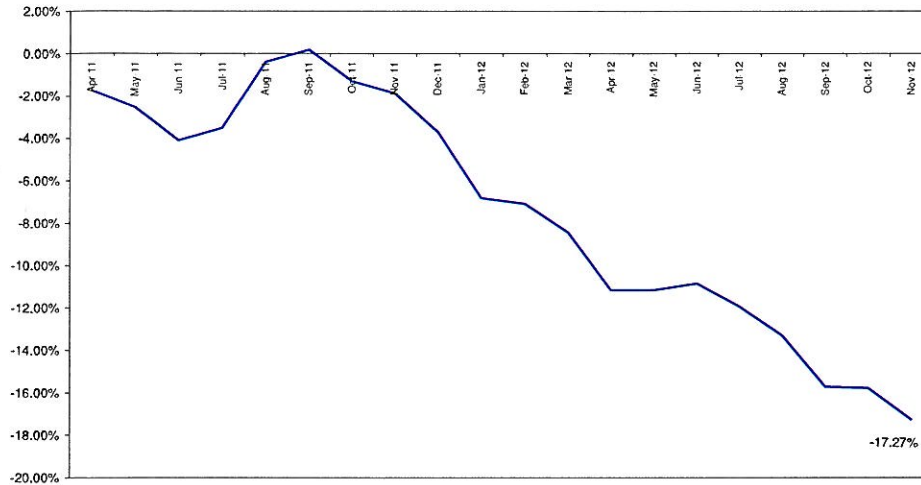
Ward Councillor Budgets	
Total Amount allocated from April	£8,238
Budget Remaining unallocated (inc. of 2012-13 allocation)	£162,115

Area Capital Fund	
Total Amount allocated this period	£0
Total Amount decommitted this period	£71,000
Budget Remaining unallocated (inc. of 2012-13 allocation)	£103,618

Others – Section 106, NCH Environmentals	
None this period	

Crime

All Crime in Bilborough -
% Change over 2010/11 Baseline (Rolling 12 Month)

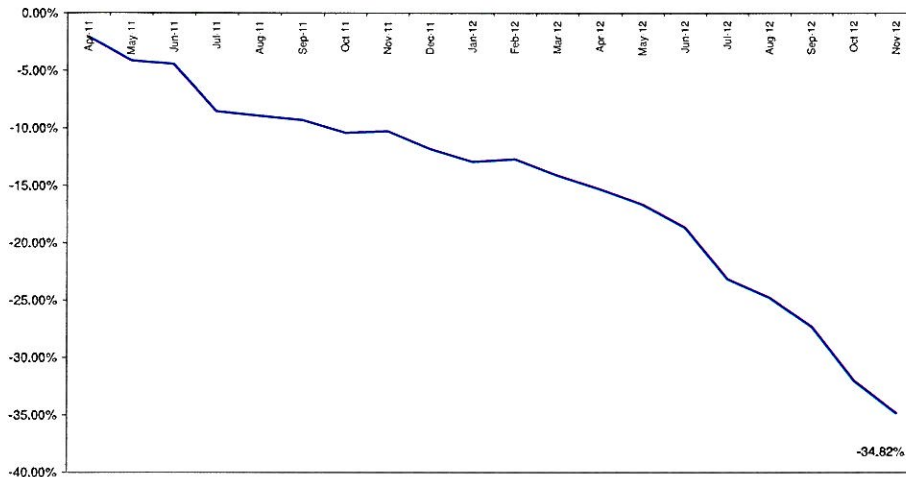


*Refers to November 2012 compared to November 2011

- In November 2012 (compared to November 2011) All Crime in Bilborough was down by 19.33% (23 crimes, see above RAG rating).
- The above graph compares All Crime over the previous 12 months to a 2010/11 baseline. On this measure All Crime volume has reduced by 17.27%.
- Year to date (compared to April-November 2011) All Crime was down by 13.61%.

All ASB

All ASB in Bilborough -
% Change over 2010/11 Baseline (Rolling 12 Month)

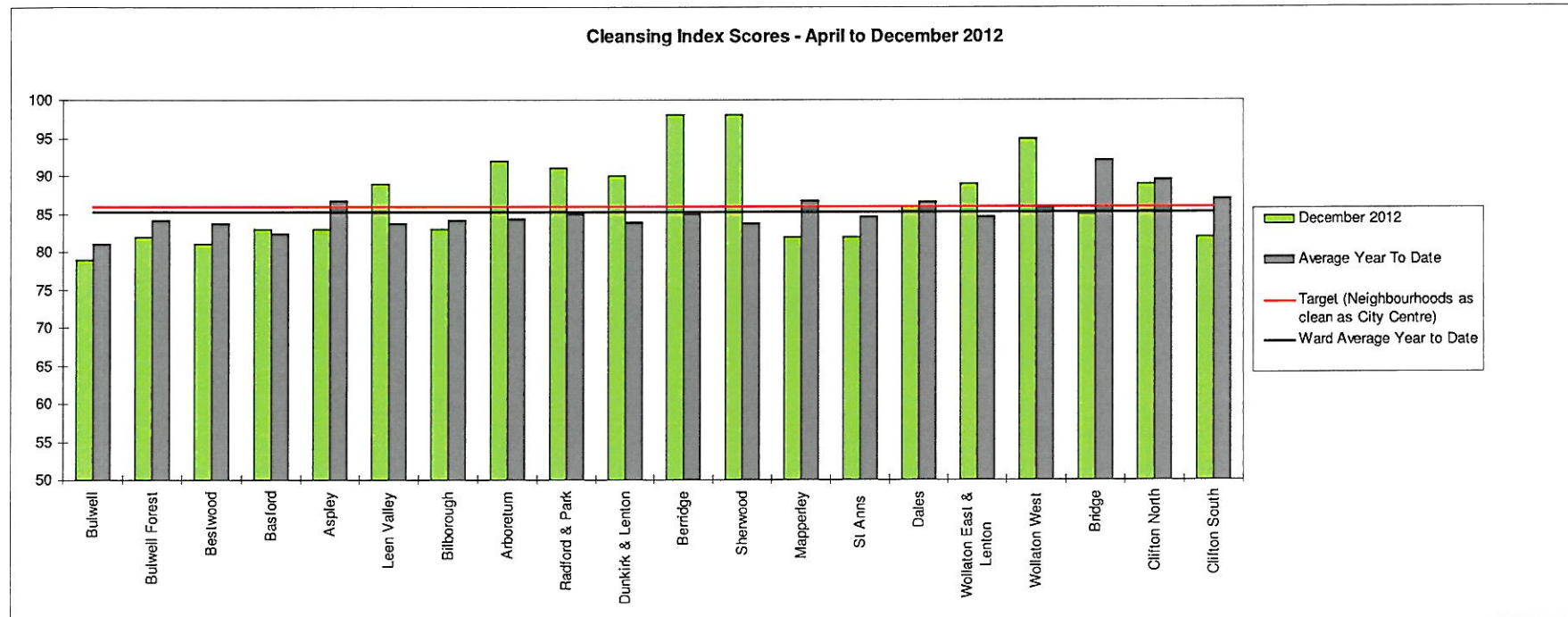


*Refers to November 2012 compared to November 2011

- In November 2012 (compared to November 2011) All ASB in Bilborough was down by 43.68% (38 calls, see above RAG rating).
- The above graph compares All ASB over the past 12 months to a long term 2010/11 baseline. Over this measure a reduction of 34.82% has been observed.
- Year to date (compared to April – November 2011) All ASB is down by 32.74%.

Cleanliness Index

This graph shows the position of your ward compared to other Wards



The “neighbourhood as clean as the city centre” benchmark target on cleanliness is to achieve a score of 86% in every ward. The 86% target is shown in red in the above graph.

To calculate the Cleanliness Index (CI) an agreed number of transects are surveyed across an area covering a range of land types. Each site surveyed is awarded a cleanliness grade based on a 7 point scale from A to D where Grade A: – no litter, and Grade D: - heavily littered. The maximum possible score of 100 is achieved when all sites achieve Grade A.

The Code of Practice for Litter and Refuse (COPLAR) requires councils to strive to reach an ‘acceptable’ standard of cleanliness (grade B or better) across the Council area. Grade A is the ultimate goal and is how a site should be immediately after sweeping but is almost impossible to maintain for any length of time. For example, a grade A site is completely free of litter – one cigarette butt takes it down to B+.

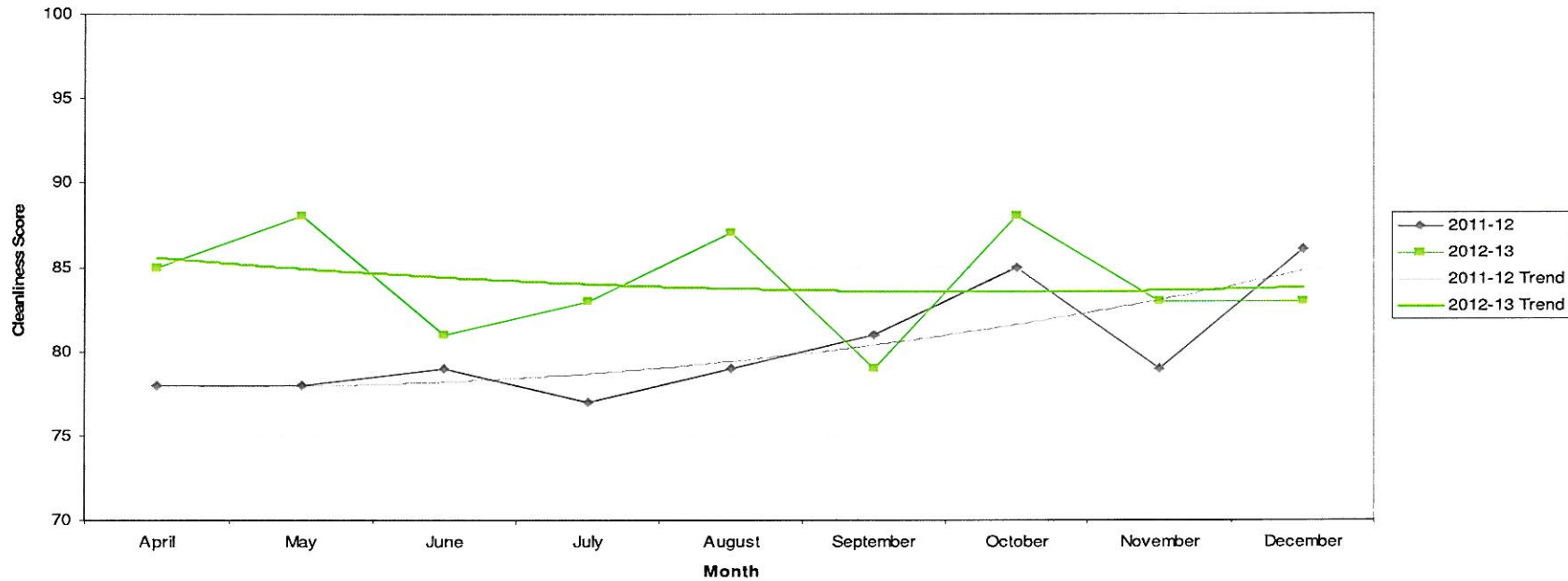
To achieve the manifesto commitment of Neighbourhoods as clean as the City Centre a target of 86 is required as that was the CI for the City Centre in May 2011. To give some context if all areas surveyed achieved a grade ‘B’ standard, this would equate to a cleanliness index of 67.

Cleanliness Index

Cleanliness Index Score	83
Performance compared to previous year	↘
Performance compared to neighbourhoods target of 86	↘

- All data refers to a comparison with the previous year's month
- It is proposed that performance over time graphs be used for each indicator
- Historic data for comparison is not available for dog fouling

Cleanliness Index

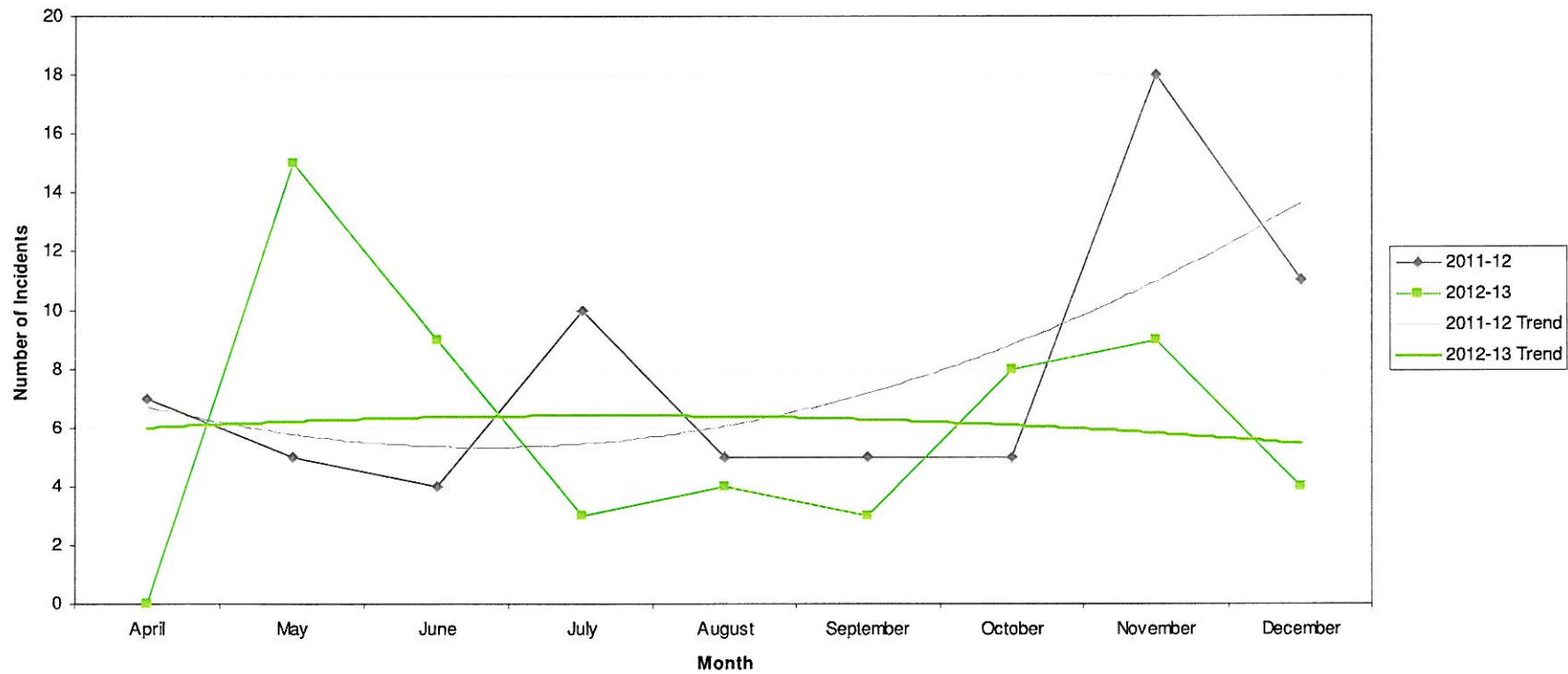


Graffiti Reports

RED		
AMBER		
GREEN	4 incidents	Decrease of 7

- All data refers to a comparison with the previous year's month
- It is proposed that performance over time graphs be used for each indicator
- Historic data for comparison is not available for dog fouling

Incidents of Graffiti

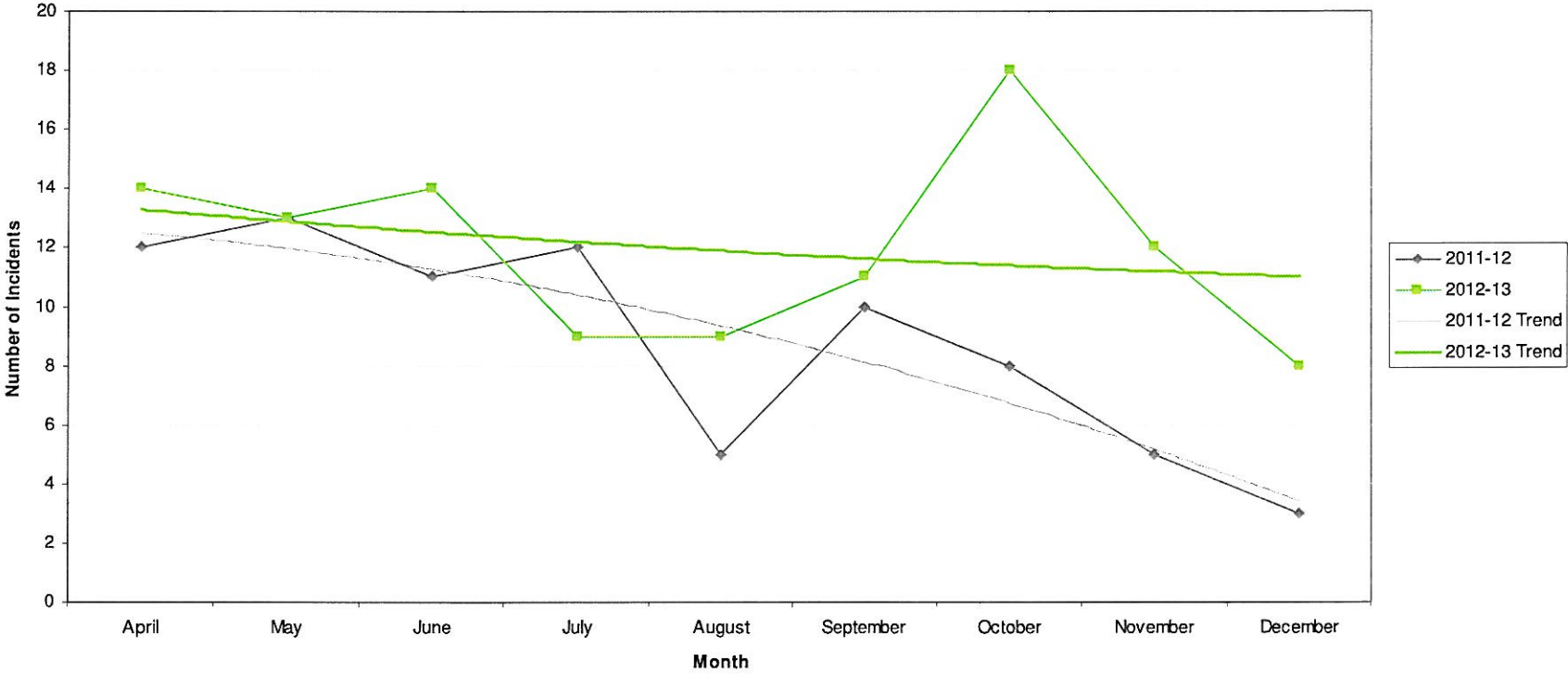


Fly Tipping

RED	8 incidents	Increase of 5
AMBER		
GREEN		

- All data refers to a comparison with the previous year's month
- It is proposed that performance over time graphs be used for each indicator
- Historic data for comparison is not available for dog fouling

Incidents of Fly Tipping



Unemployment Rate

Area	Oct-12			Change in last month		Change in last year	
	Number	Rate	City Rank	Number	%	Number	%
Arboretum	812	6.9	8	-9	-1.1	46	6
Berridge	1,041	7.1	6	-22	-2.1	90	9.5
Dunkirk and Lenton	260	2.4	19	-9	-3.3	-13	-4.8
Radford and Park	768	4.1	17	2	0.3	19	2.5
Sherwood	542	5	14	-22	-3.9	-77	-12.4
Wollaton East and Lenton Abbey	139	1.4	20	7	5.3	-2	-1.4
Wollaton West	254	2.8	18	-17	-6.3	26	11.4
Aspley	1,140	10.1	1	-34	-2.9	-28	-2.4
Basford	707	6.4	10	4	0.6	17	2.5
Bestwood	987	8.7	4	-6	-0.6	0	0
Bilborough	745	7.1	6	-37	-4.7	-16	-2.1
Bulwell	1,017	9.3	2	-12	-1.2	-2	-0.2
Bulwell Forest	429	4.7	15	-6	-1.4	-36	-7.7
Leen Valley	353	5.1	13	4	1.1	16	4.7
Bridge	707	6.7	9	-13	-1.8	-49	-6.5
Clifton North	387	4.4	16	-7	-1.8	-18	-4.4
Clifton South	507	5.8	12	16	3.3	4	0.8
Dales	864	7.4	5	-13	-1.5	34	4.1
Mapperley	702	6.3	11	0	0	-1	-0.1
St Ann's	1,234	9	3	0	0	45	3.8

This is an edited version of a report produced by: Geoff Oxendale, Information and Research Officer, Nottingham City Council

NB: Wards are ranked from 1 (highest Rate of JSA claimants) to 20 (lowest Rate).

Housing

Bilborough Ward - Housing



Anti-social behaviour - Aspley (Bilborough Ward)

Indicator	Current Target	2010/11	2011/12	2012/13		
		Value	Value	Value	Status	Trend
% of ASB cases resolved - Aspley	97.6%	94.14%	95.85%	99.16%		
% of ASB cases resolved by first intervention - Aspley	75%	-	-	87.18%		n/a

Empty properties - Bilborough Ward

Indicator	Current Target	2010/11	2011/12	2012/13		
		Value	Value	Value	Status	Trend
Average void re-let time for Bilborough Ward	26	22.9	107	30.27		
Lettable voids Bilborough Ward	-	30	20	37		
Empty properties awaiting decommission in Bilborough Ward	-	2	13	13		

Estate star ratings (from Tenant Service Inspectors)



Indicator	2010/11		2011/12		2012/13		
	Value	Status	Value	Status	Value	Status	Trend
Estate star rating - Strelley	3 Star		3 Star		3 Star		
Estate star rating - Bilborough	2 Star		3 Star		3 Star		
Estate star rating - Southwold	3 Star		3 Star		3 Star		
Estate star rating - Beechdale	3 Star		3 Star		3 Star		

Data prepared by Nottingham City Homes Performance Team







For more information please contact Tricia Quinn, Performance Review Manager on 0115 9157365 or Marcus Parton, Performance Review Officer 0115 915715

Housing

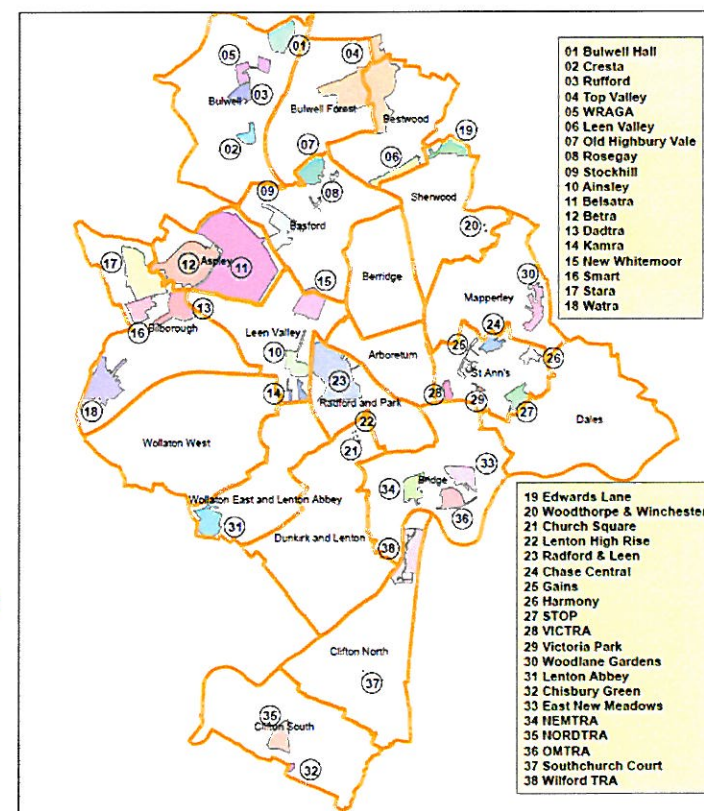
Rent collection - Aspley

Indicator	Current Target	2010/11	2011/12	2012/13		
		Value	Value	Value	Status	Trend
Rent charged that has been collected - Aspley office area	100.2%	101.5%	101.6%	100.2%		

Key:

-  Performance on or exceeding target
-  Performance below target
-  Data only performance indicator
-  Performance has improved compared to two years ago
-  Performance has deteriorated compared to two years ago
-  Performance unchanged

Map of Tenants and Residents Associations by Ward



Data prepared by Nottingham City Homes Performance Team
 For more information please contact Tricia Quinn, Performance Review Manager on 0115 9157365 or Marcus Parton, Performance Review Officer 0115 915715

Community Protection

In November 2012 in Bilborough there were 2 court outcomes. These comprised an ASBO on conviction for burglary and an outright possession order (eviction) for drugs.

Data has been received from Community Protection and where postcodes have been listed these have been geo-coded and mapped to determine the Ward. All addresses relate to the address of the Perpetrator.

FPNs are not currently available at ward level.

Fire

Table: Fire Rate (per 1000 of population) by ward (previous 12 months)

Ward	All Fire		Property		Secondary		Rank
	Volume	Rate	Volume	Rate	Volume	Rate	
Arboretum	14	1.21	5	0.43	9	0.77	13
Aspley	68	3.90	13	0.75	55	3.16	2
Basford	62	3.84	12	0.74	50	3.10	3
Berridge	44	2.23	19	0.96	25	1.27	10
Bestwood	44	2.58	13	0.76	31	1.82	7
Bilborough	46	2.75	13	0.78	33	1.97	6
Bridge	37	3.63	6	0.59	31	3.04	4
Bulwell	91	5.51	25	1.51	66	4.00	1
Bulwell Forest	43	3.13	12	0.87	31	2.26	5
Clifton North	15	1.15	4	0.31	11	0.84	16
Clifton South	19	1.36	6	0.43	13	0.93	12
Dales	19	1.18	10	0.62	9	0.56	15
Dunkirk and Lenton	11	0.91	5	0.41	6	0.50	18
Leen Valley	25	2.30	3	0.28	22	2.02	9
Mapperley	16	1.06	8	0.53	8	0.53	17
Radford and Park	30	1.48	11	0.54	19	0.94	11
Sherwood	18	1.19	3	0.20	15	1.00	14
St. Ann's	31	2.40	9	0.70	22	1.70	8
Wollaton East and Lenton Abbey	8	0.69	1	0.09	7	0.61	19
Wollaton West	5	0.34	0	0.00	5	0.34	20
Average Rate (of 20 Wards)	2.14		0.57		1.57		

Key:

	Highest
	Second Highest
	Third Highest

The table shows Rate (per 1000 of population) of All Intentional Fire, Secondary Fire and Property Fire over the previous 12 months. Bilborough has the 6th highest Rate of All Intentional Fire out of the 20 wards.

NB: Wards are ranked from 1 – 20 where 1 is the highest Rate and 20 is the lowest Rate.

Methodology

The data has not been audited or verified and therefore must only be used as a reflection of crime.

Where Crime and ASB is broken down to Ward level this data has been mapped, and using a polygon created for the *Council boundary* of the 'City Centre' this data has been removed where it has impacted on the Wards that crossed into it. Where figures for Rate of the population have been referred to, this has been taken into account for these calculations.

Where possible the most recent data is used, although for some areas this may be a month further in arrears.

Discussions continue with other agencies regarding what further data can be included.